

Marker Name: YPTC4

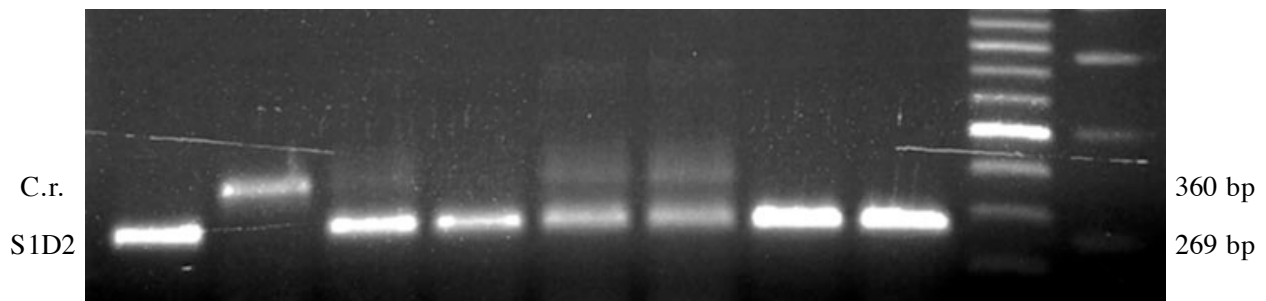
Linkage Group: II

Primer Sequences

YPTC4-R: CGCCGTGATCAGCAGCAACAAGC
 YPTC4-F2: TCCACATGATGGCTAGTGCGGACG
 YPTC4-F3: CCGTCAGCTACTGGGAAGGCCCG

Recommended For: Single Progeny Analysis Only

Samples run in a 1% agarose gel at ~110V for 1h30



DNA	S1D2	1	-	1	1	1	1	1	2	5	100 bp	1 kb
Mass Ratio	C.r.	-	1	1	2	3	4	1	1	1	MW markers	

	YPTC4
C.r. allele	360 bp
S1D2 allele	269 bp

PCR Reaction Mix (30 μ l reaction)	
Components	Amount
80% Glycerol	3.1 μ l
Formamide	0.25 μ l
GoTaq Buffer	7.0 μ l
YPTC4-R (10 μ M)	1.0 μ l
YPTC4-F2 (10 μ M)	1.0 μ l
YPTC4-F3 (10 μ M)	1.0 μ l
10mM dNTPs	0.5 μ l
H ₂ O	15.0 μ l
DNA	1.0 μ l
GoTaq DNA Poly	0.25 μ l

PCR Program		
Temperature	Time	# Cycles
94.0°C	2 min	1
94.0°C	1 min	40
56.4°C	1 min	
72.0°C	1 min	
72.0°C	10 min	1
4.0°C	∞	1