

## Marker Name: TUA2

## Linkage Group: IV

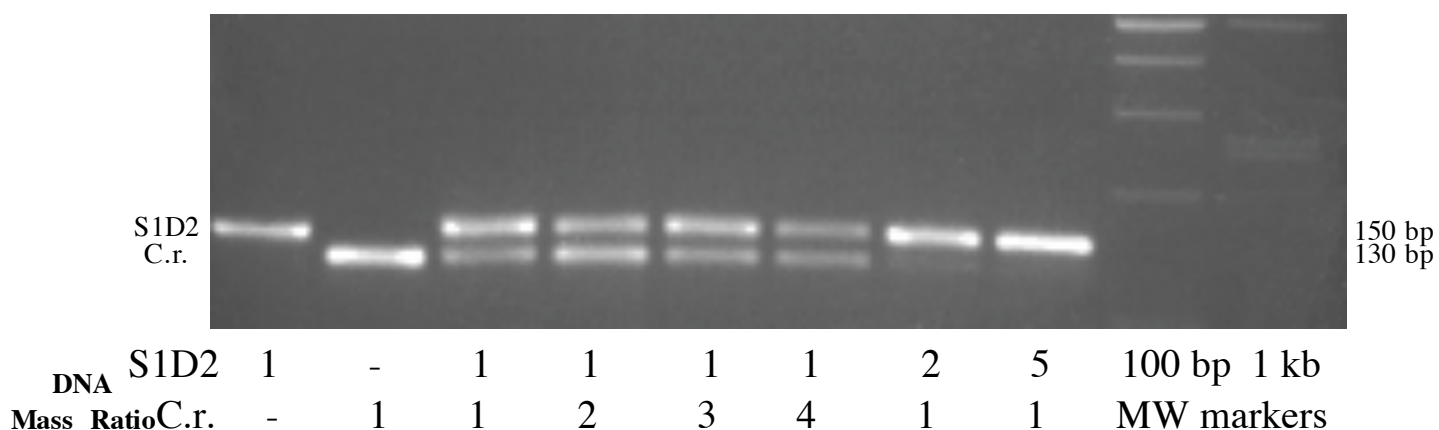
### Primer Sequences

TUA2-R: GCCAATAGAGGCACGGTCGTGGA

TUA2-F2: GGCGTGATCTGAGGCTTCGTTGG

**Recommended For:** Single or Bulked Segregant Analysis

Samples run in a 3% agarose gel at 110V for ~2h



	<b>TUA2</b>
C.r. allele	130 bp
S1D2 allele	150 bp

<b>PCR Reaction Mix</b> (30 $\mu$ l reaction)	
<b>Components</b>	<b>Amount</b>
80% Glycerol	3.1 $\mu$ l
Formamide	0.25 $\mu$ l
GoTaq Buffer	7.0 $\mu$ l
TUA2-R (10 $\mu$ M)	1.0 $\mu$ l
TUA2-F2 (10 $\mu$ M)	1.0 $\mu$ l
10mM dNTPs	0.5 $\mu$ l
H <sub>2</sub> O	16.0 $\mu$ l
DNA	1.0 $\mu$ l
GoTaq DNA Poly	0.25 $\mu$ l

<b>PCR Program</b>		
<b>Temperature</b>	<b>Time</b>	<b># Cycles</b>
94.0°C	2 min	1
94.0°C	1 min	40
55.0°C	1 min	
72.0°C	1 min	
72.0°C	10 min	
72.0°C	10 min	1
4.0°C	$\infty$	1