

Marker Name: Sulp

Linkage Group: VII

Primer Sequences

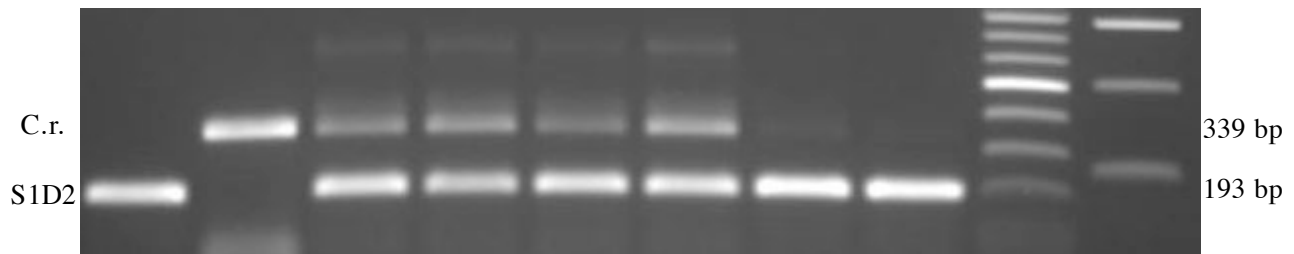
Sulp-R: TGCgTCCTTCGCTCAATCCCTGC

Sulp-F2: GTGGGAGGGGTGGGACTTTGGG

Sulp-F3: GGTATGGGGATGTCCGCACGCTTC

Recommended For: Single or Bulked Segregant Analysis

Samples run in a 1% agarose gel at ~110V for 1h30



DNA	S1D2	1	-	1	1	1	1	2	5	100 bp	1 kb
Mass Ratio	C.r.	-	1	1	2	3	4	1	1	MW markers	

	Sulp
C.r. allele	339 bp
S1D2 allele	193 bp

PCR Reaction Mix (30 µl reaction)	
Components	Amount
80% Glycerol	3.1 µl
Formamide	0.25 µl
GoTaq Buffer	7.0 µl
Sulp-R (10 µM)	1.0 µl
Sulp-F2 (10 µM)	1.0 µl
Sulp-F3 (10 µM)	1.0 µl
10mM dNTPs	0.5 µl
H ₂ O	15.0 µl
DNA	1.0 µl
GoTaq DNA Poly	0.25 µl

PCR Program		
Temperature	Time	# Cycles
94.0°C	2 min	1
94.0°C	1 min	40
55.0°C	1 min	
72.0°C	1 min	
72.0°C	10 min	1
4.0°C	∞	1