

Marker Name: PF20

Linkage Group: IV

Primer Sequences

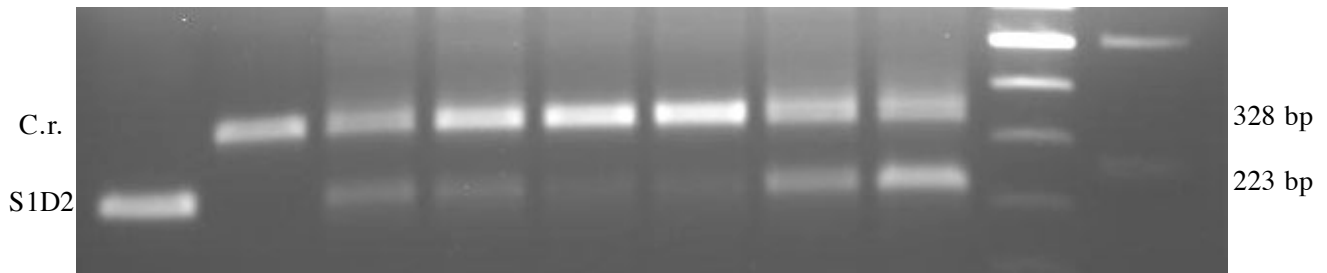
PF20-F: TGTCTCTCCGTTCCCTTGCGCG

PF20-F4: GGACCCCGGTCCTCTGCTACCG

PF20-R2: ACACACCAAACCGCCCATGACCC

Recommended For: Single or Bulked Segregant Analysis

Samples run in a 1% agarose gel at 110V for ~1h30



| | | | | | | | | | | | |
|------------|------|---|---|---|---|---|---|---|---|------------|------|
| DNA | S1D2 | 1 | - | 1 | 1 | 1 | 1 | 2 | 5 | 100 bp | 1 kb |
| Mass Ratio | C.r. | - | 1 | 1 | 2 | 3 | 4 | 1 | 1 | MW markers | |

| | PF20 |
|-------------|--------|
| C.r. allele | 328 bp |
| S1D2 allele | 223 bp |

| PCR Reaction Mix (30 μ l reaction) | |
|---|--------------|
| Components | Amount |
| 80% Glycerol | 3.1 μ l |
| Formamide | 0.25 μ l |
| GoTaq Buffer | 7.0 μ l |
| PF20-F (10 μ M) | 1.0 μ l |
| PF20-F4 (10 μ M) | 1.0 μ l |
| PF20-R2 (10 μ M) | 1.0 μ l |
| 10mM dNTPs | 0.5 μ l |
| H ₂ O | 15.0 μ l |
| DNA | 1.0 μ l |
| GoTaq DNA Poly | 0.25 μ l |

| PCR Program | | |
|-------------|----------|----------|
| Temperature | Time | # Cycles |
| 94.0°C | 2 min | 1 |
| 94.0°C | 1 min | 40 |
| 59.3°C | 1 min | |
| 72.0°C | 1 min | |
| 72.0°C | 10 min | |
| 72.0°C | 10 min | 1 |
| 4.0°C | ∞ | 1 |