

## Marker Name: KAT

## Linkage Group: X

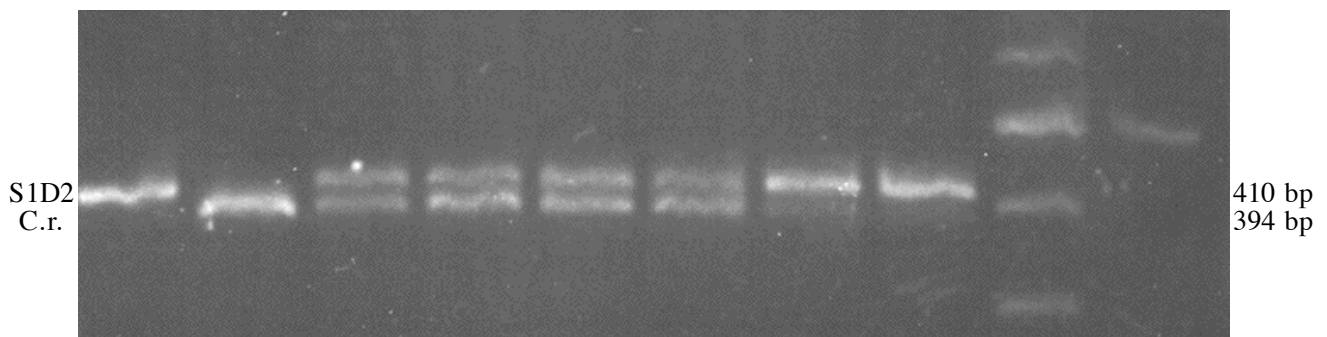
### Primer Sequences

KAT-F: ACGAGGAGTGGCTCAGCGTGTTCG

KAT-R: GGACGCCCAAGCTTCAAATCCACG

**Recommended For:** Single or Bulked Segregant Analysis

Samples run in a 3% agarose gel at ~110V for 2h



DNA	S1D2	1	-	1	1	1	1	2	5	100 bp	1 kb
Mass Ratio	C.r.	-	1	1	2	3	4	1	1	MW markers	

	KAT
C.r. allele	394 bp
S1D2 allele	410 bp

PCR Reaction Mix (30 $\mu$ l reaction)	
Components	Amount
80% Glycerol	3.1 $\mu$ l
Formamide	0.25 $\mu$ l
GoTaq Buffer	7.0 $\mu$ l
KAT-F (10 $\mu$ M)	1.0 $\mu$ l
KAT-R (10 $\mu$ M)	1.0 $\mu$ l
10mM dNTPs	0.5 $\mu$ l
H <sub>2</sub> O	16.0 $\mu$ l
DNA	1.0 $\mu$ l
GoTaq DNA Poly	0.25 $\mu$ l

PCR Program		
Temperature	Time	# Cycles
94.0°C	2 min	1
94.0°C	1 min	40
55.0°C	1 min	
72.0°C	1 min	
72.0°C	10 min	
72.0°C	10 min	1
4.0°C	$\infty$	1