

Marker Name: IDA2

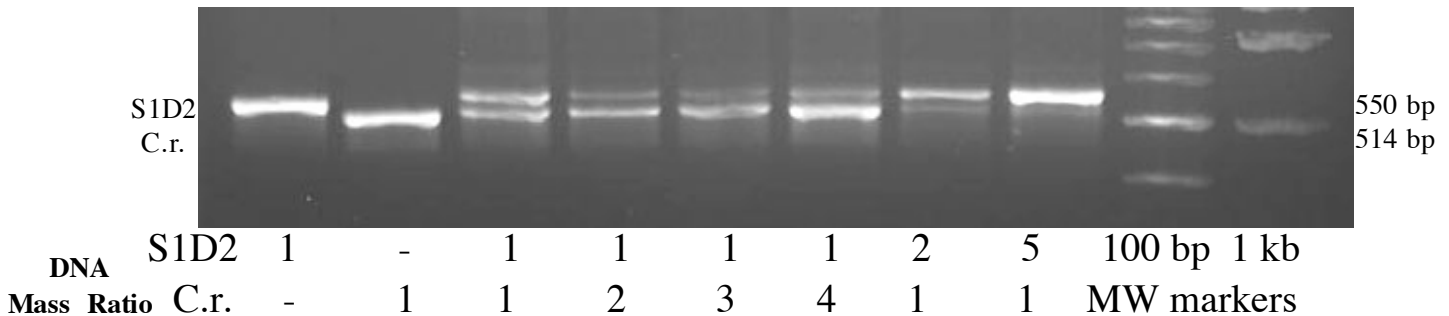
Linkage Group: XV

Primer Sequences

IDA2-F: TGCTGCTGTCGCTGGCCACGTA
IDA2-R: TCACGGCAACCTGAAAGGACGCC

Recommended For: Single or Bulked Segregant Analysis

Samples run in a 3% agarose gel at ~110V for 2h



	IDA2
C.r. allele	514 bp
S1D2 allele	550 bp

PCR Reaction Mix (30 μ l reaction)	
Components	Amount
80% Glycerol	3.1 μ l
Formamide	0.25 μ l
GoTaq Buffer	7.0 μ l
IDA2-F (10 μ M)	1.0 μ l
IDA2-R (10 μ M)	1.0 μ l
10mM dNTPs	0.5 μ l
H ₂ O	16.0 μ l
DNA	1.0 μ l
GoTaq DNA Poly	0.25 μ l

PCR Program		
Temperature	Time	# Cycles
94.0°C	2 min	1
94.0°C	1 min	40
55.0°C	1 min	
72.0°C	1 min	
72.0°C	10 min	
72.0°C	10 min	1
4.0°C	∞	1