

Marker Name: GSAT

Linkage Group: III

Primer Sequences

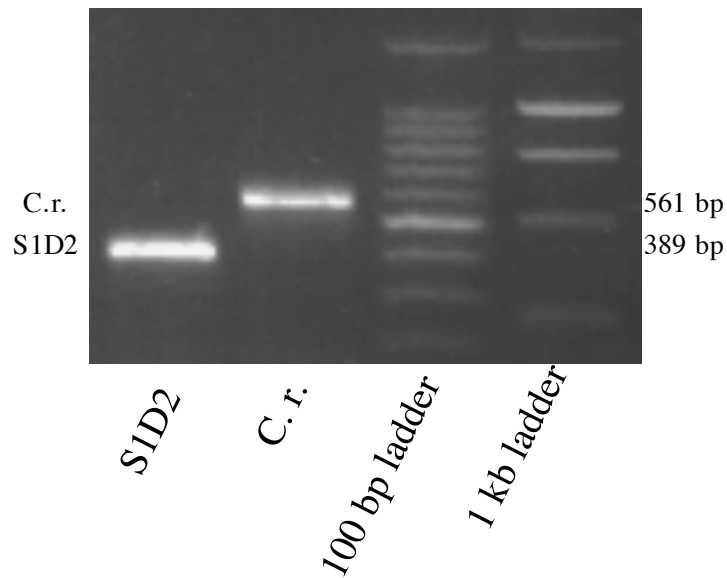
GSAT-R: GAGGGTGCAATCAGAGCCCCCTTG

GSAT-F2: CGCGTGCACAGCTTGCAGCAA

GSAT-F3: CGGGCGGTGCCTGGTTCTTCG

Recommended For: Single Progeny Analysis Only

Samples run in a 1% agarose gel at ~110V for 1h30



| | GSAT |
|-------------|-------------|
| C.r. allele | 561 bp |
| S1D2 allele | 389 bp |

| PCR Reaction Mix (30 μ l reaction) | |
|--|---------------|
| Components | Amount |
| 80% Glycerol | 3.1 μ l |
| Formamide | 0.25 μ l |
| GoTaq Buffer | 7.0 μ l |
| GSAT-R (10 μ M) | 1.0 μ l |
| GSAT-F2 (10 μ M) | 1.0 μ l |
| GSAT-F3 (10 μ M) | 1.0 μ l |
| 10mM dNTPs | 0.5 μ l |
| H ₂ O | 15.0 μ l |
| DNA | 1.0 μ l |
| GoTaq DNA Poly | 0.25 μ l |

| PCR Program | | |
|--------------------|-------------|-----------------|
| Temperature | Time | # Cycles |
| 94.0°C | 2 min | 1 |
| 94.0°C | 1 min | 40 |
| 55.0°C | 1 min | |
| 72.0°C | 1 min | |
| 72.0°C | 10 min | |
| 72.0°C | 10 min | 1 |
| 4.0°C | ∞ | 1 |