

Marker Name: EST894011B10

Linkage Group: XV

Primer Sequences

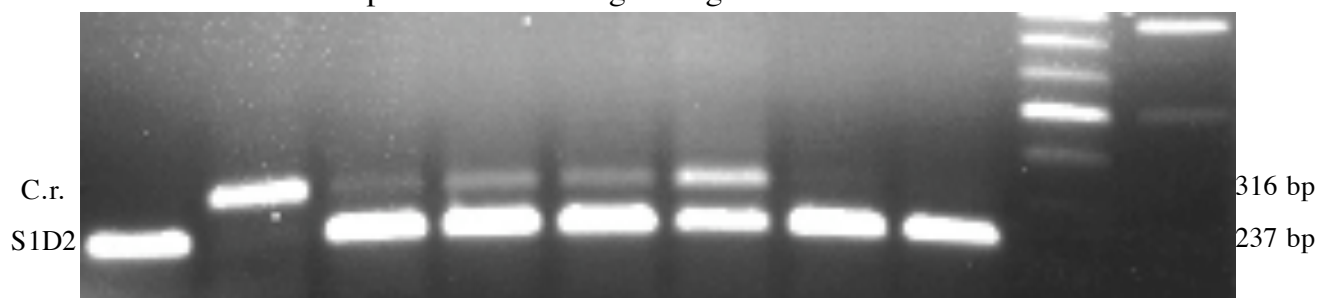
EST894011B10-R: CCCCAAATCAGCATGGGGTCC

EST894011B10-F2: TGGATGAGGTGGGGTCGTTTGTCTG

EST894011B10-F3: ACTGGCGTCGCGTCTGCAGG

Recommended For: Single or Bulked Segregant Analysis

Samples run in a 1% agarose gel at ~110V for 1h30



DNA	S1D2	1	-	1	1	1	1	2	5	100 bp	1 kb
Mass Ratio	C.r.	-	1	1	2	3	4	1	1	MW markers	

	EST894011B10
C.r. allele	316 bp
S1D2 allele	237 bp

PCR Reaction Mix (30 μ l reaction)	
Components	Amount
80% Glycerol	3.1 μ l
Formamide	0.25 μ l
GoTaq Buffer	7.0 μ l
EST894011B10-R (10 μ M)	1.0 μ l
EST894011B10-F2 (10 μ M)	1.0 μ l
EST894011B10-F3 (10 μ M)	1.0 μ l
10mM dNTPs	0.5 μ l
H ₂ O	15.0 μ l
DNA	1.0 μ l
GoTaq DNA Poly	0.25 μ l

PCR Program		
Temperature	Time	# Cycles
94.0°C	2 min	1
94.0°C	1 min	40
55.0°C	1 min	
72.0°C	1 min	
72.0°C	10 min	1
4.0°C	∞	1