

Marker Name: CYTC6

Linkage Group: XVIII

Primer Sequences

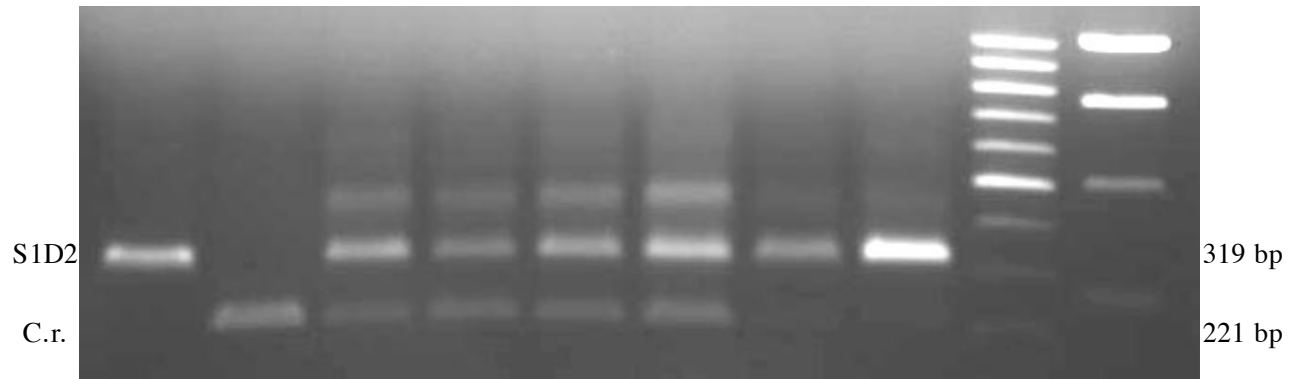
CYTC6-R: AAGCGCGTTCATGGTTCGGCC

CYTC6-F2: GTGTAGCTAGCTTTTGCCCCGGCA

CYTC6-F3: CATCACGCAAATGGACACGTTCCG

Recommended For: Single or Bulked Segregant Analysis

Samples run in a 1% agarose gel at ~110V for 1h30



DNA	S1D2	1	-	1	1	1	1	2	5	100 bp	1 kb
Mass Ratio	C.r.	-	1	1	2	3	4	1	1	MW markers	

	CYTC6
C.r. allele	221 bp
S1D2 allele	319 bp

PCR Reaction Mix (30 μ l reaction)	
Components	Amount
80% Glycerol	3.1 μ l
Formamide	0.25 μ l
GoTaq Buffer	7.0 μ l
CYTC6-R (10 μ M)	1.0 μ l
CYTC6-F2 (10 μ M)	1.0 μ l
CYTC6-F3 (10 μ M)	1.0 μ l
10mM dNTPs	0.5 μ l
H ₂ O	15.0 μ l
DNA	1.0 μ l
GoTaq DNA Poly	0.25 μ l

PCR Program		
Temperature	Time	# Cycles
94.0°C	2 min	1
94.0°C	1 min	40
55.0°C	1 min	
72.0°C	1 min	
72.0°C	10 min	1
4.0°C	∞	1