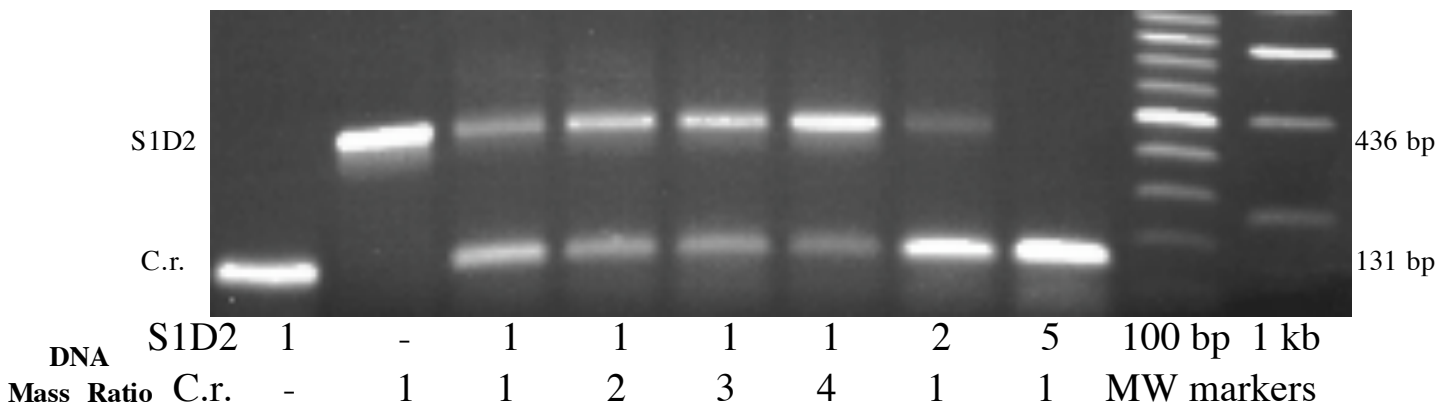


Marker Name: CYTC1
Linkage Group: XVI/XVII

Primer Sequences
 CYTC1-F: GCCCATCAAGTCGCAGCGCATC
 CYTC1-R3: CAGCTGAACAGCCTGTGCGGCA
 CYTC1-R4: GCAAAGACACTCAGGCCGCGCTC

Recommended For: Single or Bulked Segregant Analysis

Samples run in a 1% agarose gel at ~110V for 1h30



	CYTC1
C.r. allele	131 bp
S1D2 allele	436 bp

PCR Reaction Mix (30 μ l reaction)	
Components	Amount
80% Glycerol	3.1 μ l
Formamide	0.25 μ l
GoTaq Buffer	7.0 μ l
CYTC1-F (10 μ M)	1.0 μ l
CYTC1-R3 (10 μ M)	1.0 μ l
CYTC1-F4 (10 μ M)	1.0 μ l
10mM dNTPs	0.5 μ l
H ₂ O	15.0 μ l
DNA	1.0 μ l
GoTaq DNA Poly	0.25 μ l

PCR Program		
Temperature	Time	# Cycles
94.0°C	2 min	1
94.0°C	1 min	40
66.0°C	1 min	
72.0°C	1 min	
72.0°C	10 min	
72.0°C	10 min	1
4.0°C	∞	1