

## Marker Name: CPX1

### Linkage Group: II

#### Primer Sequences

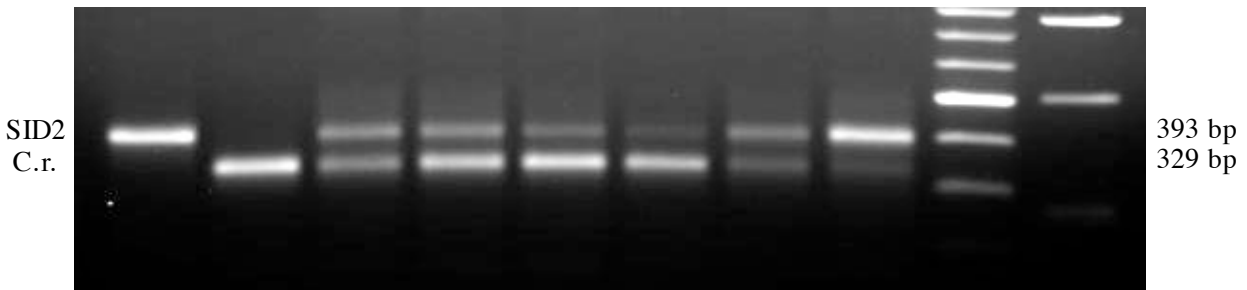
CPX1-F: TTGCGTGCTAGCAGGCGTGGTG

CPX1-R2: GCTCCAAACCTGCTGCGGTCAGTC

CPX1-R3: GCACGCACACACGCACACGA

**Recommended For:** Single or Bulked Segregant Analysis

Samples run in a 1% agarose gel at ~110V for 1h30



DNA	S1D2	1	-	1	1	1	1	2	5	100 bp	1 kb
Mass Ratio	C.r.	-	1	1	2	3	4	1	1	MW markers	

	<b>CPX1</b>
C.r. allele	329 bp
S1D2 allele	393 bp

<b>PCR Reaction Mix</b> (30 $\mu$ l reaction)	
Components	Amount
80% Glycerol	3.1 $\mu$ l
Formamide	0.25 $\mu$ l
GoTaq Buffer	7.0 $\mu$ l
CPX1-F (10 $\mu$ M)	1.0 $\mu$ l
CPX1-R2 (10 $\mu$ M)	1.0 $\mu$ l
CPX1-R3 (10 $\mu$ M)	1.0 $\mu$ l
10mM dNTPs	0.5 $\mu$ l
H <sub>2</sub> O	15.0 $\mu$ l
DNA	1.0 $\mu$ l
GoTaq DNA Poly	0.25 $\mu$ l

<b>PCR Program</b>		
Temperature	Time	# Cycles
94.0°C	2 min	1
94.0°C	1 min	40
61.0°C	1 min	
72.0°C	1 min	
72.0°C	10 min	1
4.0°C	$\infty$	1