

## Marker Name: CPN60B1

### Linkage Group: XIX

#### Primer Sequences

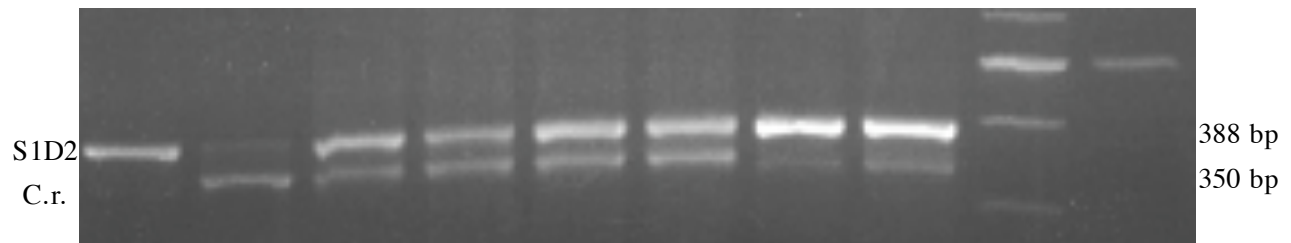
CPN60B1-F2: GATTGGGGGCAGTGGGCAGG

CPN60B1-R2: CACCGCCATGCGAAAGTGCC

CPN60B1-F3: GCCTGTGCGGGATGGCGTGAG

**Recommended For:** Single or Bulked Segregant Analysis

Samples run in a 3% agarose gel at ~110V for 2h



<b>DNA</b>	S1D2	1	-	1	1	1	1	2	5	100 bp	1 kb
<b>Mass Ratio</b>	C.r.	-	1	1	2	3	4	1	1	MW markers	

	<b>CPN60B1</b>
C.r. allele	350 bp
S1D2 allele	388 bp

<b>PCR Reaction Mix</b> (30 $\mu$ l reaction)	
<b>Components</b>	<b>Amount</b>
80% Glycerol	3.1 $\mu$ l
Formamide	0.25 $\mu$ l
GoTaq Buffer	7.0 $\mu$ l
CPN60B1-F2 (10 $\mu$ M)	1.0 $\mu$ l
CPN60B1-R2 (10 $\mu$ M)	1.0 $\mu$ l
CPN60B1-F3 (10 $\mu$ M)	1.0 $\mu$ l
10mM dNTPs	0.5 $\mu$ l
H <sub>2</sub> O	15.0 $\mu$ l
DNA	1.0 $\mu$ l
GoTaq DNA Poly	0.25 $\mu$ l

<b>PCR Program</b>		
<b>Temperature</b>	<b>Time</b>	<b># Cycles</b>
94.0°C	2 min	1
94.0°C	1 min	40
56.0°C	1 min	
72.0°C	1 min	
72.0°C	10 min	
72.0°C	10 min	1
4.0°C	$\infty$	1