

## Marker Name: AC206

## Linkage Group: XIV

### Primer Sequences

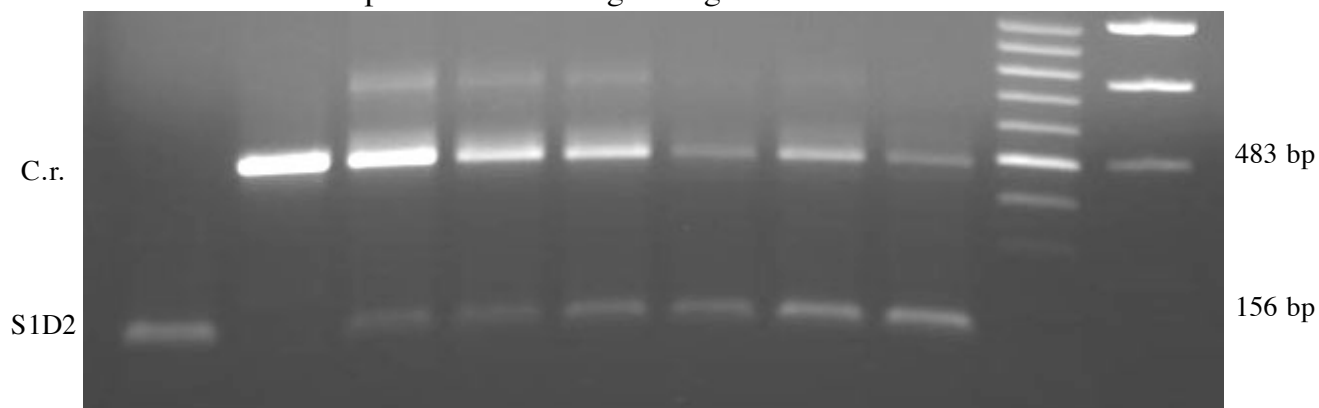
AC206-R: ACGAATGCTGGGTGGGCCAAGC

AC206-F2: GGGGTCACGACAGGGGTAGGGTG

AC206-F3: CGTGCGGCAAACAAGCACCCCTTG

**Recommended For:** Single or Bulked Segregant Analysis

Samples run in a 1% agarose gel at ~110V for 1h30



|            |      |   |   |   |   |   |   |   |   |            |      |
|------------|------|---|---|---|---|---|---|---|---|------------|------|
| DNA        | S1D2 | 1 | - | 1 | 1 | 1 | 1 | 2 | 5 | 100 bp     | 1 kb |
| Mass Ratio | C.r. | - | 1 | 1 | 2 | 3 | 4 | 1 | 1 | MW markers |      |

|             |              |
|-------------|--------------|
|             | <b>AC206</b> |
| C.r. allele | 483 bp       |
| S1D2 allele | 156 bp       |

| <b>PCR Reaction Mix</b><br>(30 $\mu$ l reaction) |              |
|--|--------------|
| Components                                       | Amount       |
| 80% Glycerol                                     | 3.1 $\mu$ l  |
| Formamide  | 0.25 $\mu$ l |
| GoTaq Buffer                                     | 7.0 $\mu$ l  |
| AC206-R (10 $\mu$ M)                             | 1.0 $\mu$ l  |
| AC206-F2 (10 $\mu$ M)                            | 1.0 $\mu$ l  |
| AC206-F3 (10 $\mu$ M)                            | 1.0 $\mu$ l  |
| 10mM dNTPs                                       | 0.5 $\mu$ l  |
| H <sub>2</sub> O                                 | 15.0 $\mu$ l |
| DNA  | 1.0 $\mu$ l  |
| GoTaq DNA Poly                                   | 0.25 $\mu$ l |

| <b>PCR Program</b> |          |          |
|--------------------|----------|----------|
| Temperature        | Time     | # Cycles |
| 94.0°C             | 2 min    | 1        |
| 94.0°C             | 1 min    | 40       |
| 64.7°C             | 1 min    |          |
| 72.0°C             | 1 min    |          |
| 72.0°C             | 10 min   | 1        |
| 4.0°C              | $\infty$ | 1        |